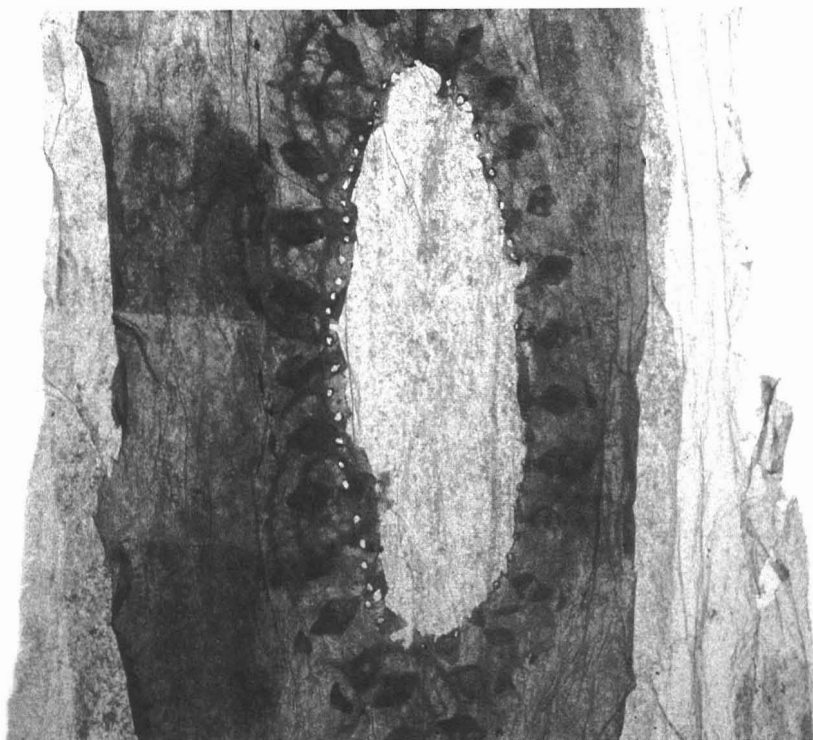


Sandra Gregson



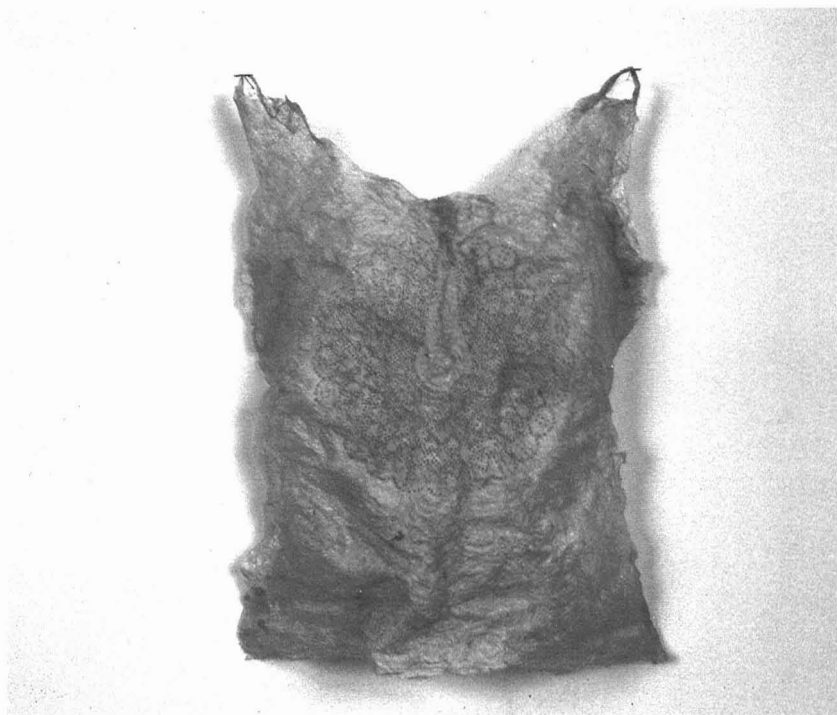
detail, *Mind of Flesh (instilled)*, 1997, tissue paper, Japanese tissue, rabbit skin glue, flax string, 129 x 85.6 cm, photo: Simon Glass



Swaddling, 1992, cement fondue, burlap, copper wire,
59 x 47 x 11cm, photo: Simon Glass



Freudian Slippers, 1991, cable, cement, cement fondue, fibreglass cloth, wire mesh, 106 x 38 x 13 cm, photo: Simon Glass



(untitled), 1997, silk tissue, rabbit skin glue, photocopy, heat transfer,
43 x 30 x 11 cm, photo: Simon Glass